

Product:

SEAFOOD MIX

INDIV. QUICK FROZEN, 8x3LB BAG

AKA: Paella Mix, Seafood Medley
Form: Frozen, Skinless, Boneless & Well Trimmed
Origin: China
Allergens: Contains Mollusk, Crustaceans & Shellfish
Ingredients: Squid, Octopus, Mussels & Shrimp
Method of Capture: Squid & Octopus (Wild Caught) / Mussels & Shrimp (Farmed)
Flavor Graph: Mild **Medium** Full Flavored
Texture Graph: Delicate **Medium** Firm
Suggested Cooking Methods: Baking Broiling **Ceviche** Flat Top **Frying** Grilling Sashimi **Sautee** **Soups**
Seasonality: **Jan Feb Mar Apr May Jun Jul Aug Sep Oct Nov Dec**
Storage: Keep Frozen at -18C or Colder **Shelf Life (frozen):** 24 months
Thawing Instructions: Remove from bag and thaw under refrigeration for 4-6 hours or place under running water until thawed.
Thawed Storing Tips: Keep Refrigerated, use within 24 hours for best results.
Pack: Individually Quick Frozen, 8x3lb Bag, 24lb Corrugated Case
Dimensions: **Box:** L 9" x W 12" x H 6.1" **Ti x Hi:** 8x8
Bag: L 0.8" x W 10.25" x H 14.6"

NETUNO Item #	Size	Case Size	Master GTIN	Master UPC
102386	N/A	24lb	10857428006865	857428006868



Nutrition Facts

4 servings per container

Serving size (113g)

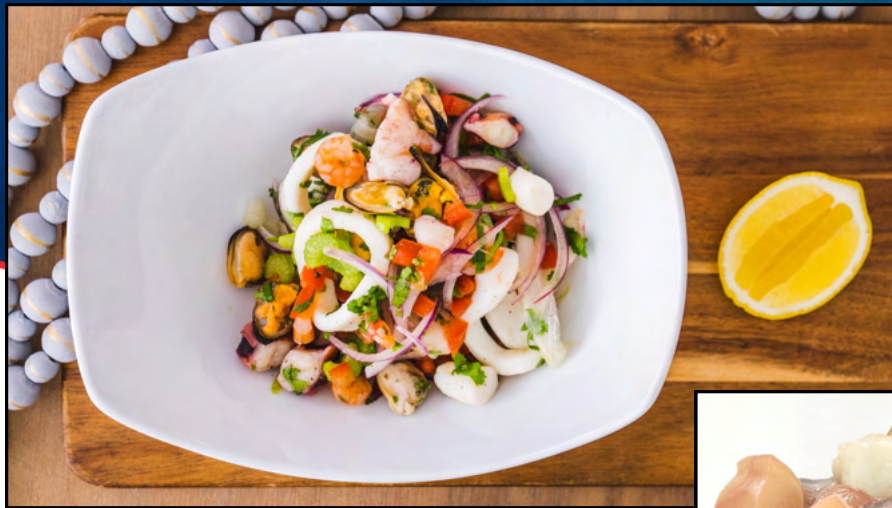
Amount Per Serving

Calories **70**

% Daily Value*

Total Fat 1g	1%
Saturated Fat 0g	0%
Trans Fat 0g	
Cholesterol 100mg	33%
Sodium 370mg	16%
Total Carbohydrate 1g	0%
Dietary Fiber 0g	0%
Total Sugars 0g	
Includes 0g Added Sugars	0%
Protein 13g	26%
Vitamin D 0mcg	0%
Calcium 26mg	2%
Iron 1.08mg	6%
Potassium 141mg	4%

*The % Daily Value (DV) tells you how much a nutrient in a serving of food contributes to a daily diet. 2,000 calories a day is used for general nutrition advice.



Product:

SEAFOOD MIX

INDIV. QUICK FROZEN, 24x1LB BAG

AKA: Paella Mix, Seafood Medley
Form: Frozen, Skinless, Boneless & Well Trimmed
Origin: China
Allergens: Contains Mollusk, Crustaceans & Shellfish
Ingredients: Squid, Octopus, Mussels & Shrimp
Method of Capture: Squid & Octopus (Wild Caught) / Mussels & Shrimp (Farmed)
Flavor Graph: Mild **Medium** Full Flavored
Texture Graph: Delicate **Medium** Firm
Suggested Cooking Methods: Baking Broiling **Ceviche** Flat Top **Frying** Grilling Sashimi **Sautee** **Soups**
Seasonality: **Jan Feb Mar Apr May Jun Jul Aug Sep Oct Nov Dec**
Storage: Keep Frozen at -18C or Colder **Shelf Life (frozen):** 24 months
Thawing Instructions: Remove from bag and thaw under refrigeration for 4-6 hours or place under running water until thawed.
Thawed Storing Tips: Keep Refrigerated, use within 24 hours for best results.
Pack: Individually Quick Frozen, 24x1lb Bag, 24lb Corrugated Case
Dimensions: **Box:** L 8.5" x W 10.25" x H 5.5" **Ti x Hi:** 8x7
Bag: L 3.4" x W 7.75" x H 10.15"

NETUNO Item #	Size	Case Size	Master GTIN	Master UPC
102385	N/A	24lb	10856856006676	856856006679



Nutrition Facts

4 servings per container

Serving size (113g)

Amount Per Serving

Calories **70**

% Daily Value*

Total Fat 1g	1%
Saturated Fat 0g	0%
Trans Fat 0g	
Cholesterol 100mg	33%
Sodium 370mg	16%
Total Carbohydrate 1g	0%
Dietary Fiber 0g	0%
Total Sugars 0g	
Includes 0g Added Sugars	0%
Protein 13g	26%
Vitamin D 0mcg	0%
Calcium 26mg	2%
Iron 1.08mg	6%
Potassium 141mg	4%

*The % Daily Value (DV) tells you how much a nutrient in a serving of food contributes to a daily diet. 2,000 calories a day is used for general nutrition advice.